



TOKYO MARATHON 2025

EASTERN JAPAN

Experience JAPAN along the race course.
produced by STARTS



Tokyo Marathon 2025 will be held on Sunday, March 2nd. Why not experience Japan while cheering on the race by visiting specialty stores and restaurants of each prefecture along the course?



HOKKAIDO pref. Hokkaido Dosanko Plaza Yurakucho

Ever-popular store featuring all the rich foods from the northern lands.

Hokkaido, Japan's northernmost island, is a treasure trove of culinary delights. Hokkaido butterscotch salt made from raw milk and butter is 681 yen (a), and sake Pon-pere in the adorable bear cub ceramics 1,650 yen (b) make great souvenirs. The freshly fried beef croquettes 195 yen (c) and other side dishes are also popular.



Hokkaido Dosanko Plaza Yurakucho
1F., Tokyo Kotsu Kaikan, 2-10-1 Yurakucho, Chiyoda-ku, Tokyo
☎ 03-5224-3800
Hours: 10:00AM - 8:00PM
Closed days: Year-end and New Year's holidays

AOMORI pref. Aomori Hokusaihan

Apples and black garlic, Aomori's pride. All foods delicious and good for health!

Aomori's pride, the "Kibou no shizuku" 179 yen (d), a straight juice squeezed from Aomori's famous apples using a proprietary process, is truly fresh. This store also offers a wide variety of healthful processed foods, such as "Kuro no kiwami" 1,188 yen (e), which is made by slowly aging black garlic, a specialty of Aomori, and "Yamato Shijimi Miso Soup" 1,188 yen (f).



Aomori Hokusaihan
1F., Aomori Prefectural Hall, 2-3-11 Fujimi, Chiyoda-ku, Tokyo
☎ 03-3237-8371 Hours: 10:00AM - 7:30PM (Last day of month - 6:00PM) Closed days: Open 365 days

IWATE pref. Iwate Ginga Plaza

Iwate is amazingly rich in food, sake, and crafts. Traditional items are also evolving in a modern way.

"Choco Nanbu" 648 yen (g), evolving of the famous local Nanbu rice cracker, is a popular item available only in winter and spring. Activated origin of sake "Yukikko" 330 yen (h) is a muddy sake with a mild sweetness that is easy on the palate. The traditional Oshu Nanbu ironware kyusu (small teapot) 9,900 yen (i) fits in with daily use and is cute enough.



Iwate Ginga Plaza
1F., Nankai Tokyo Bldg., 5-15-1 Ginza, Chuo-ku, Tokyo
☎ 03-3524-8282 Hours: 10:30AM - 7:00PM (Last day of month - 5:00PM) Closed days: December 31st - January 4th



AKITA pref. Akita Bisaikan

Enjoy the tastes of Akita, the land of gourmet food, calm in an authentic restaurant or at ease in a casual dining.

"Kiritanpo Cup Soup Oshiruko" 639 yen (j), where you can easily enjoy Kiritanpo, a local delicacy of Akita, a famous rice-producing region, and "Cream Cheese Mayo" 648 yen (k), which contains traditional foods Iburigakko, are also excellent in taste. "Nama morokoshi" 735 yen (l), a sweet with a rich flavor of roasted azuki beans, is moist and elegant melting.



Akita Bisaikan
1F., Wing Takanawa WEST-III, 4-10-8 Takanawa, Minato-ku, Tokyo
☎ 03-5447-1010 Hours: 11:00AM - 11:00PM [Dining] Lunch 11:00AM - 3:30PM (LO 2:30PM) Dinner 5:00PM - 11:00PM (Food LO 10:00PM) Closed days: January 1st

TOCHIGI pref. Tochimaruru Shop

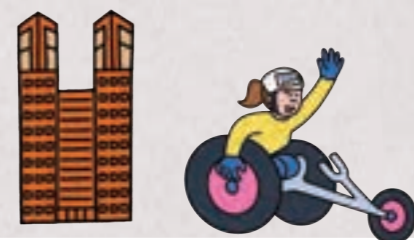
Recommended Items filled with local love, familiar to Tochigi residents.

Tochigi Prefecture is home to famous landmarks such as Nikko and Nasu. "Kanto-Tochigi lemon dressing" 648 yen (m), loved by Tochigi residents, and the "Gekikara Ao-togarashi-zuke" 454 yen (n), made from green chili peppers pickled in soy sauce, are particularly popular. The Oya stone frog figurine 1,265 yen (o) and up, is a good-luck charm that will bring you back home safely.



Tochimaruru Shop
4F., Tokyo Skytree Town Solamachi East Yard, 1-1-2 Oshiage, Sumida-ku, Tokyo
☎ 03-5809-7280 Hours: 10:00AM - 9:00PM Closed days: Accordance with Solamachi

SUN., Mar. 2
TOKYO MARATHON 2025
START



IIDABASHI

[AOMORI pref.] Aomori Hokusaihan

UENO



NIHOMBASHI



ASAKUSA

[TOCHIGI pref.] Tochimaruru Shop

MONZEN-NAKACHO



SHINJUKU

5km

10km

15km

25km

HOKKAIDO
TOHOKU
KANTO
HOKURIKU
CHUBU

NIIGATA pref.
Ginza Niigata Information Center
THE NIIGATA

Experience the food of Niigata, proud of its rice.
"Onigiri" sales and "Sake" tasting are available.

As is typical of Niigata, a rice-producing region, there is a full lineup of rice dishes, such as "salted salmon with fresh kanzuri" 1,279 yen (p), which is made by aging fatty salmon. The "Le lectier juice" 956 yen (q) and "THE NIIGATA COOKIE" 2,206 yen (r), made with local specialty ingredients such as rice flour and green tea, are also well-received.

THE NIIGATA

5-6-7 Ginza, Chuo-ku, Tokyo ☎ 03-6280-6635
Hours: 10:30AM - 7:30PM Closed days: January 1st - January 3rd
* Holidays vary according to restaurant.



NAGANO pref.
Ginza NAGANO

Nagano is vast and has a diverse culinary culture.
Try the best local products with a long history!

Nagano Prefecture is rich in nature, nestled among mountains. The store, which was recently renovated in the fall of 2024, offers a wide range of famous local products, including "Gohei-mochi" rice cakes with a sweet and spicy miso sauce for 972 yen (s), "Meika Kurumi-soba" baked buns made with buckwheat flour, walnuts and white bean paste for 800 yen (t), and "Misuzu-ame" candy made with domestic fruit for 961 yen (u).

Ginza NAGANO
NOCO Bldg., 5-6-5 Ginza, Chuo-ku, Tokyo ☎ 03-6274-6015
Hours: 10:30AM - 7:00PM Closed days: No fixed



SHIZUOKA pref.
GINZA NODAYA

Taste to be content the flavors of Shizuoka,
blessed with mild climate, ocean and mountains!

The owner, a native of Shizuoka Prefecture, focuses on Shizuoka products, from fresh fish and vegetables to local sake and seasonings. "Shizuoka-style oden" stewed skewers served with sweet miso paste 250 yen (v) and up, has a sophisticated taste of broth from beef sinew. The seasonal sashimi platter (w) from 2,500 yen per person, which is procured mainly from Suruga Bay, is also exquisite.

GINZA NODAYA

4F., Kinroku Bldg., 8-7-9 Ginza, Chuo-ku, Tokyo ☎ 03-6264-5504
Hours: 5:00PM - 11:00PM (LO 10:30PM), Sat. - 10:00PM (LO 9:30PM)
Closed days: Sun. and Holidays * Sat. irregularly during the summer.



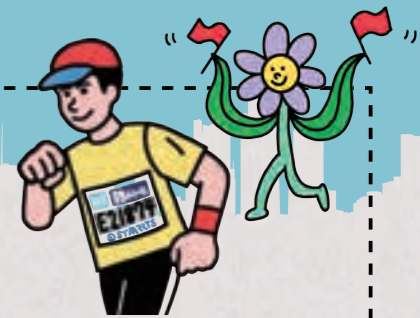
* Photo shows 2 servings.

COLUMN



STARTS's Business in Eastern Japan

STARTS has been supporting the Tokyo Marathon as an official partner since the first race, and developing a variety of businesses across Japan centered on construction and real estate. In this issue, we will introduce some of the businesses in Eastern Japan!



HOKKAIDO pref.

ACCOMMODATION
Hotel Emion Sapporo

This hotel is conveniently located near JR Sapporo Station. Spacious guest rooms, a large public bath equipped with a sauna, and a hotel bar with a pleasant atmosphere will provide the guests with a quality travel experience.

1-4, Kita 8-jo Nishi, Kita-ku, Sapporo-shi, Hokkaido ☎ 011-374-6627
Access / about 40 min. by train from New Chitose Airport, about 4 min. walk from North Exit of Sapporo Sta. on JR Hakodate Line and others, directly connected to Exit 15 of the underground passageway of Sapporo Sta. on Subway Toho Line (via residential building)



CHIBA pref.

ACCOMMODATION
Hotel Emion Tokyo Bay

This hotel is a Tokyo Disney Resort® Partner Hotel. In addition to safe, clean and comfortable guest rooms, the hotel offers natural hot springs and delicious Japanese cuisine to relieve the guests of travel fatigue and make the stay truly relaxed.

1-1-1 Hinode, Urayasu-shi, Chiba ☎ 047-304-2727
Access / about 7 min. walk from Shin-Urayasu Sta. on JR Keiyo Line and Musashino Line



KANAGAWA pref.

ACCOMMODATION
Hotel Comento Yokohama Kannai

This hotel was established in 2024, conveniently located within walking distance of Chinatown, Yokohama Stadium, and the Minato Mirai area. There are 11 different types of guest rooms to meet a wide range of demands.

2-7-2 Furo-cho, Naka-ku, Yokohama-shi, Kanagawa
☎ 045-222-0027 Access / about 5 min. walk from South Exit of Kannai Sta. on JR Keihin-Tohoku Line, about 4 min. walk from Exit 1 of Isezaki Chojamachi Sta. on Yokohama Municipal Subway



AOMORI pref.

MUSEUM
Hirosaki Museum of Contemporary Art

This museum was opened in 2020 by renovating a brick warehouse built in the Taisho era as a sake brewery. In the renovation, STARTS used its proprietary earthquake-resistant technology to reinforce the magnificent brick walls while keeping them intact. And STARTS is also involved in the operation of the museum after its completion.

2-1 Yoshino-cho, Hirosaki-shi, Aomori ☎ 0172-32-8950
Hours: 9:00AM - 5:00PM Closed days: Tue. (if Tue. is a national holiday, the museum will be open on Tue. and closed the next day) Access / about 10 min. by bus from Hirosaki Sta. on the JR Ou Main Line, about 4 min. walk from Nakadote-cho bus stop



MIYAGI pref.

CONDOMINIUM/APARTMENT
"Seismic Isolation Technology" to protect lives from major earthquakes

The starting point of STARTS for efforts to promote seismic isolation in rental housing was a rental condominium completed in 2001 in Sendai City, Miyagi Prefecture. At the time of its completion, seismic isolation was still a rarity, but it proved effective in the Great East Japan Earthquake of 2011, resulting in zero damage. Today, more than 620 seismically isolated buildings have been constructed throughout Japan.

The first seismically isolated rental condominium building of STARTS
Construction site / Sendai-shi, Miyagi
Structure / Base-isolated, reinforced concrete, 8 stories Completion / March 2001



TOKYO MARATHON 2025

WESTERN JAPAN



Experience JAPAN along the race course.
produced by STARTS



Tokyo Marathon 2025 will be held on Sunday, March 2nd. Why not experience Japan while cheering on the race by visiting specialty stores and restaurants of each prefecture along the course?



FUKUI pref. FUKUI ANTENNA SHOP GINZA

Must-try delicacies from the Sea of Japan and made by long-established shops.

Fukui is blessed with seafood and a rich food culture. The seasonal seafood rice bowl and Echizen oroshi soba (buckwheat noodles) set meal for 2,480 yen (a) is a firm favorite. The deep-fried big hard tofu for 747 yen (b) and the mild sweet mizu-yokan (red bean jelly) for 750 yen (c) are both excellent products made by a established shop.



FUKUI ANTENNA SHOP GINZA
1-5-8 Ginza, Chuo-ku, Tokyo
☎03-5159-4291 Hours: 10:30AM - 7:00PM [Dining] Lunch 11:00AM - 3:00PM (LO 3:30PM) Dinner 5:00PM - 9:00PM (LO 8:00PM) Sat., Sun. and holidays 11:00AM - 8:00PM (LO 7:00PM) Closed days: Year-end and New Year's holidays, and other irregular holidays

SHIGA pref. COCOSHIGA

Omi Beef, taste it at a restaurant or to-go, one of the three major wagyu beef in Japan.

This is a good place to enjoy Omi beef, one of the three major beef in Japan, at a great price. Recommended are the exquisite sukiyaki set 9,800 yen (d), which includes both loin and lean cuts of beef at the restaurant, and the cut-offs (250g) 1,728 yen (e) at the store. The palm-sized Shigaraki-ware (red bean jelly) for 1,320 yen (f) is an ornament of a raccoon dog that brings good luck.



COCOSHIGA
2-7-1 Nihombashi, Chuo-ku, Tokyo ☎03-6281-9871 Hours: 10:00AM - 8:00PM [Restaurant] Lunch 11:30AM - 2:30PM (LO 2:00PM), Dinner 5:00PM - 10:00PM (LO 9:00PM) [Sat., Sun. and holidays] Lunch - 3:30PM (LO 3:00PM), Dinner - 9:00PM (LO 8:00PM) Closed days: Year-end and New Year's holidays
* Please call for restaurant reservations. ☎03-6281-9872



HIROSHIMA pref. Fuchu City Antenna shop NEKI

Excellent gourmet long loved by the locals of Fuchu City, Hiroshima, flourished as a post town.

The specialty "Bingo Fuchu-yaki" features the use of minced beef. The basic "Nikutama-soba" 1,100 yen (g) is exquisite with the good taste of the meat and the crispy texture of the noodles. Western liquor cake 700 yen (h), a longtime local favorite, and the aromatic and flavorful Fuchu miso 700 yen (i), are gems that are hard to find in Tokyo.



Fuchu City Antenna Shop NEKI
1F., NBF Ogawamachi Bldg., 1-3-1 Kanda-ogawamachi, Chiyoda-ku, Tokyo
☎03-6811-7980 Hours: 10:00AM - 8:00PM [Restaurant] Lunch 11:30AM - 2:30PM (LO 2:00PM), Dinner 5:00PM - 10:00PM (Food LO 9:00PM), Sun. and holidays 11:30AM - 5:00PM [Shop] 11:30AM - closing hours of the day Closed days: Wed., Year-end and New Year's holidays, and other irregular holidays



SHIMANE pref. HIBIYA SHIMANE-KAN

Enjoy a rice bowl topped with the freshest premium fish. Shimane's old and new gourmet foods are all together!

A standard favorite, "Nodoguro-don set" 1,400 yen (j), features exceptional fatty sashimi (simply sliced raw fish). The refreshing of white ale 706 yen (k), made from the premium grape "Shine Muscat," and the salty in the sweetness of Hamada's Sashimi Soy Sauce Caramel 291 yen (l), are good for a snack after running!

HIBIYA SHIMANE-KAN
B1F., Hibiya Chante, 1-2-2 Yurakucho, Chiyoda-ku, Tokyo
☎03-6457-9404 Hours: 11:00AM - 8:00PM (Eat-in LO 7:00PM)
Closed days: Accordance with Hibiya Chante



KAGAWA pref. & EHIME pref. Kagawa-Ehime Setouchi Shunsaikan

Local cuisine, famous confections, crafts and daily necessities, the rich bounty of the Setouchi region is gathered here!

There is a wide selection of specialties from Kagawa and Ehime prefectures. The sea bream set meal 1,400 yen (m), to enjoy the local delicacies of both prefectures at once, is a set of "Sanuki Udon" (noodles) and Uwajima's "Tai-meshi" (sea bream rice). Sanuki Udon patterned hand towel 770 yen (n) and Ehime's famous yuzu-flavored confection "Ichiroku Tart" 162 yen (o), are perfect for a casual gift.



Kagawa-Ehime Setouchi Shunsaikan
182F., Shimbashi Marine Bldg., 2-19-10 Shimbashi, Minato-ku, Tokyo
☎03-3574-7792 (Local specialty store) ☎03-5537-2684 (Restaurant, Crafts and sundries store) Hours: [Store] 10:00AM - 8:00PM [Restaurant] 11:00AM - 3:30PM (LO 3:00PM), 5:00PM - 11:00PM (LO 10:00PM) Closed days: January 1st - January 3rd

SUN., Mar. 2
TOKYO MARATHON 2025
START



[MIYAZAKI pref.]
Miyazaki Products shop KONNE in Shinjuku

IIDABASHI

[FUKUOKA pref.]
Kojimachi NADAMAN Fukuoka Bettei

[HIROSHIMA pref.]
Fuchu City Antenna shop NEKI

UENO



[SHIGA pref.]
COCOSHIGA

NIHOMBASHI



ASAKUSA



MONZEN NAKACHO



25km

HOKURIKU
KINKI
CHUGOKU
SHIKOKU
KYUSHU
OKINAWA

FUKUOKA pref.
Kojimachi NADAMAN Fukuoka Bettei

The finest ingredients from Fukuoka are brought to a higher level by the expert arts of the long-established over 190 years.

The famous restaurant "NADAMAN," whose interior is decorated with traditional local crafts, offers Japanese cuisine using seasonal local ingredients, drawing on the skills. The lunch "Fukuoka shunshai kobako" (p) is full of Fukuoka's prized delicacies, including seafood from the Genkai Sea, Hakata wagyu beef, Genki-tsukushi rice and Asakura-kioh-ran eggs.

Kojimachi NADAMAN Fukuoka Bettei
1F., Sumitomo Fudosan Fukuoka Hanzomon Bldg., 1-12-1 Kojimachi, Chiyoda-ku, Tokyo ☎ 03-6380-8421 Hours: [Lunch] 11:30AM - 2:30PM (LO 1:30PM) [Dinner] 5:00PM - 9:30PM (LO 8:00PM) * Reservation only for dinner on Sat. (reservation required by the day before). Closed days: Sun. and Holidays, Year-end and New Year's holidays, summer holidays, and other irregular holidays



MIYAZAKI pref.
Miyazaki Products shop KONNE in Shinjuku

Delicious and nutritious! Miyazaki's high-level delicacies come together!

Miyazaki Prefecture is one of the top producers of chicken meat in Japan. Smoked meats of the prefecture's young chickens 920 yen (q) have an appealing smoky aroma and moist texture. The "Kyushu Pure Butter Cookies" with a mouth melting texture for 594 yen (r) and the "OH! Osakana" with small fish and nuts for 480 yen (s) are also popular.

Miyazaki Products shop KONNE in Shinjuku
Shinjuku Southern Terrace, 2-2-1 Yoyogi, Shibuya-ku, Tokyo ☎ 03-5333-7764 Hours: 10:00AM - 8:00PM
Closed days: January 1st - January 3rd



OKINAWA pref.
Ginza Washita Shop Main Store

Bustling like a local market, popular store with a tropical atmosphere.

The most popular hot snack, mozuku seaweed tempura for 250 yen (t), is addictive to its sweet koromo (batter) and the scent of the seashore that spreads in mouth. A wide variety of items are available to enjoy a tropical atmosphere at home, such as Soki Soba for 950 yen (u), which can be easily made to authentic taste, and a traditional Yachimun plate for 2,970 yen (v).

Ginza Washita Shop Main Store
1F., Tokyo Kotsu Kaikan, 2-10-1 Yurakucho, Chiyoda-ku, Tokyo ☎ 03-6701-8220 Hours: 10:00AM - 8:00PM, [Eat-in] 10:30AM - 6:45PM
Closed days: December 31st and January 3rd



RYOGOKU

NIHOMBASHI

[FUKUI pref.]
FUKUI ANTENNA SHOP GINZA

[OKINAWA pref.]
Ginza Washita Shop Main Store

GINZA

[KAGAWA pref. & EHIME pref.]
Kagawa-Ehime Setouchi Shunsaikan

SHIBA PARK

HIBIYA

[SHIMANE pref.]
HIBIYA SHIMANE-KAN



FINISH

MARUNOUCHI

30km

35km

40km

COLUMN

STARTS's Business in Western Japan

STARTS has been supporting the Tokyo Marathon as an official partner since the first race, and developing a variety of businesses across Japan centered on construction and real estate. In this issue, we will introduce some of the businesses in Western Japan and overseas!



ACCOMMODATION
Hotel Emion KYOTO

This hotel is conveniently located one stop from JR Kyoto Sta. The first and second floors of the hotel also feature commercial facilities with a theme of Kyoto's food and traditions. Visitors can enjoy their stay while feeling the atmosphere of the ancient capital.

20-4 Sujakudonokuchi-cho, Shimogyo-ku, Kyoto-shi, Kyoto ☎ 075-323-2727 Access / 3 min. by train (1 stop) from Kyoto Sta. on JR Kyoto Line and Tokaido Shinkansen, 2 min. walk from Umekoji Kyoto Nishi Sta. on JR Sagano Line via connecting passage



ACCOMMODATION
OKINAWA NaHaNa HOTEL & SPA

This hotel is a convenient base for the stay in Okinawa, with easy access to major sightseeing spots such as shopping street "Kokusai-dori" and "Nami-no-ue Beach," only a 10 minute walk away. It also has a spa with dry and mist saunas, and a buffet with about 50 different menus, including Okinawan cuisine, giving it a great resort feel.

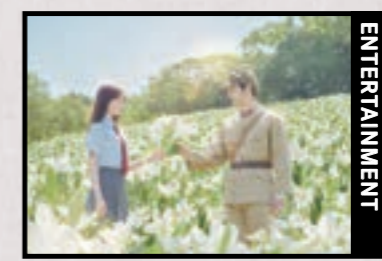
2-1-5 Kume, Naha City, Okinawa ☎ 098-866-0787 Access / about 10 min. by car from Naha Airport, about 5 min. walk from Asahibashi Sta. on Yui Rail



MULTI-PURPOSE FACILITY
OTO RIVERSIDE TERRACE

Okazaki City is rooted in a rich culinary culture and history. Directly connected to the station, "OTO RIVERSIDE TERRACE" is a place of relaxation where hotels, cafes, restaurants, cultural spots and coworking spaces gather. Once a month, a march is also held.

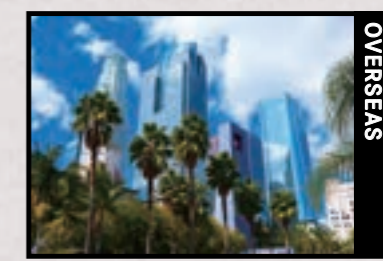
2-14-1 Kamimiyodaji-cho, Okazaki-shi, Aichi, etc. Access / about 3 min. walk from Higashi-Okazaki Sta. on Meitetsu Nagoya Main Line * Please contact each store for details such as business hours. https://oto-riversideterrace.com/



MOVIE
TILL WE MEET AGAIN ON THE LILY HILL

Based on a romance novel inspired by the "Chiran Peace Museum" (Minamikyushu City, Kagoshima Prefecture), the series has sold a total of 1.5 million copies. The movie co-produced by STARTS Group was a huge hit with an audience of over 4.5 million.

Original novel / *Till we meet again on the lily hill,* written by Natsue Shiomi, STARTS Publishing Library Director / Yoichi Narita ©2023 *Till we meet again on the lily hill" Production Committee



INTERNATIONAL BUSINESS
GLOBAL NETWORK

STARTS Group operates in 21 countries* and 33 cities overseas. Its business activities include brokering leasing and sales of company housing for expatriates, offices, and manufacturing facilities for business companies expanding overseas, as well as brokering sales and purchases of overseas real estate for wealthy individuals. * Including also regions.

https://www.starts.co.jp/kaigai/
https://www.starts.co.jp/kaigai/lp/en/

HOKURIKU
KINKI
CHUGOKU
SHIKOKU
KYUSHU
OKINAWA